

TMH Side Entry Mixers



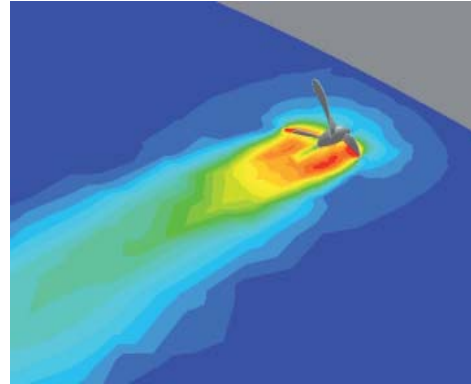
The Plenty TMH Series Side Entry Mixers

The Plenty Package

Plenty has been supplying fluid agitation equipment for over 50 years and, as an engineering company, has been established for over 200 years providing a wealth of engineering experience. Modern manufacturing techniques produce the highest quality equipment, backed by ISO 9001:2000 accreditation.

The Plenty TMH mixers are a durable range of side entry mixers with an extensive application portfolio for blending, storage, or homogeneity duties in diverse industries:

- Vegetable Oil Processors
- Oil Bunkers
- Breweries
- Alcohol Distilleries
- Sugar Refineries
- Chemicals
- Hydrocarbon Production & Processing
- Wineries
- Soft Drink Manufacturers
- Biofuels Storage
- Water Treatment
- Crude Oil



Impeller directs a focused flow

Features

Plenty TMH Mixers are compact and durable, providing wide process flexibility with assured results.

- High efficiency impellers for optimum mixing and power savings
- Positive shut off device allows mechanical seal and bearing changes under full tank conditions
- Tooth belt for long life and positive engagement between motor and mixer shaft
- All 316 stainless steel wetted parts construction
- Maintenance-free bearings
- Bearing system minimizes seal deflection
- L10 bearing life in excess of 65,000 hours
- Single sleeve mounted mechanical seal
- 4" ANSI mounting flange
- Power range 1.1 - 5.5 kW / 1.5 - 7.5 HP
- CE & ATEX 2 G / ATEX 3 G certification available

Belt Drive

Belt drive, HTD timing belt and PD helical offset belt option

- Large heavy duty ball bearings
- Suitable for 50 and 60 Hz supply
- Fixed output speed 425 RPM +/- 5%

Tank Shut Off

A taper to taper metal tank shut-off system ensures that the shaft is positively clamped in the shut-off position such that the contents are prevented from escape while the seal is replaced. The system incorporates a safety check valve.

Impeller

- A312 is standard
- Plenty Forward Rake propeller is optional



A312



Plenty Forward Rake

Shaft

A one piece solid shaft accurately machined to specified length and diameter

Wetted Parts

The mixers are manufactured as standard with wetted parts in 316 stainless steel. Other materials can be provided for specific application needs. The wetted parts can also be supplied with a polished finish.

Motor

- IEC and NEMA are available

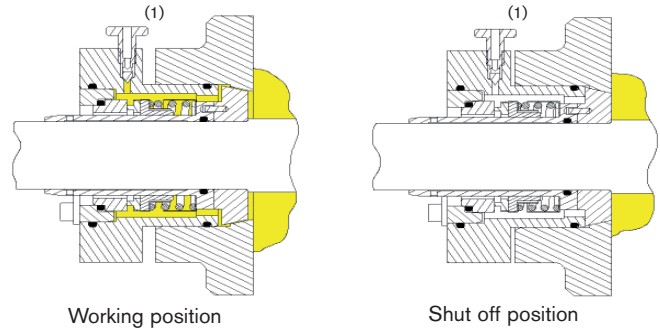
Mounting Options

- 4" ANSI flange is standard
- Adapters and Coverplates are available

Mechanical Seal

Mechanical seals are sleeve mounted for ease of maintenance. The mechanical seal is completely enclosed within a seal housing that also incorporates a back up seal to restrict leakage in the event of ultimate seal failure.

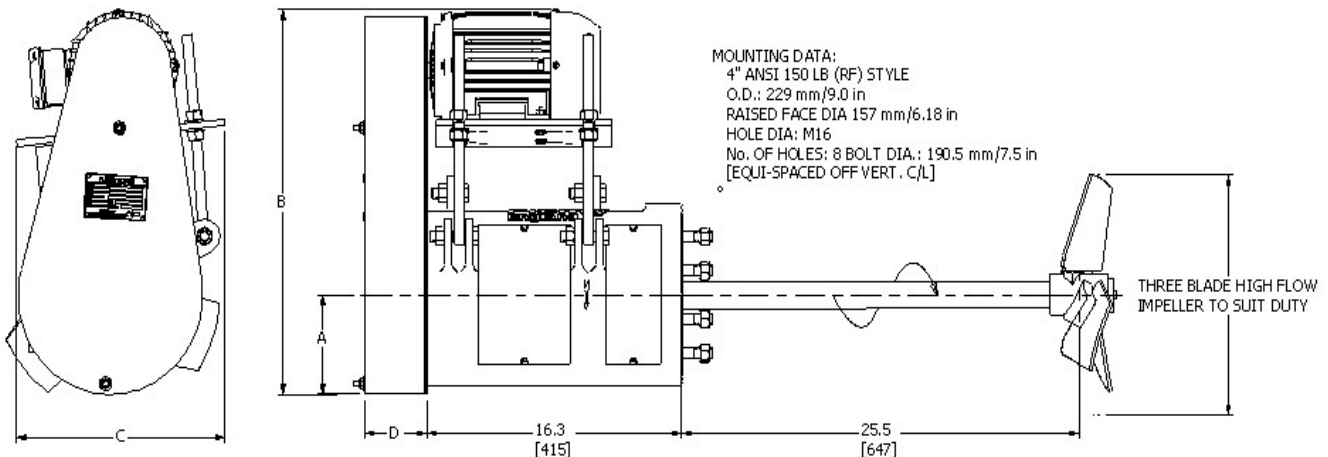
An air release valve⁽¹⁾ is fitted to the seal housing for venting the seal chamber to ensure that it is completely filled with product (liquid) prior to initial and post maintenance start-up. The air release valve is used to prove the shut off is 100% operational before any maintenance work is started.



Plenty TMH Product Specification

Shaft Diameter	Mounting	Drive	Motor kW/HP	Mixer Model Number	Available A312 Impeller Diameters			
					14 in.	16 in.	18 in.	20 in.
38 mm	Fixed	Belt	1.1 / 1.5	14A-38-TMH1.5HP	Standard			
			1.5 / 2	16A-38-TMH2HP	Optional	Standard		
			2.2 / 3	16A-38-TMH3HP	Optional	Standard		
			4 / 5	18A-38-TMH5HP		Optional	Standard	
			5.5 / 7.5	20A-38-TMH7.5HP			Optional	Standard

PLENTY TMH SPECIFICATIONS (CERTIFIED DIMENSIONS/WEIGHTS AFTER RECEIPT OF ORDER)					
MOTOR (kW/HP)	A (mm/in)	B (mm/in)	C (mm/in)	D (mm/in)	UNIT WEIGHT (kg/lbs)
1.1 / 1.5	190/5.9	581/22.9	340/13.4	104/4.1	118/260
1.5 / 2	190/5.9	581/22.9	340/13.4	104/4.1	119/263
2.2 / 3	190/5.9	631/24.8	358/14.1	104/4.1	137/301
4 / 5	190/5.9	631/24.8	358/14.1	104/4.1	140/308
5.5 / 7.5	230/9.1	754/29.7	460/18.1	125/5.9	165/363



**SPX is a global multi-industry manufacturing leader with a presence in 35 countries.
We transform ideas into powerful solutions to help our customers meet their goals,
overcome business challenges and thrive in a complex, always-changing marketplace.**



Your local contact:



Plenty Mixers, An SPX Brand
135 Mt. Read Blvd.
Rochester, NY 14611
Phone: (585) 436-5550 Fax: (585) 438-5589
E-mail: plentymixers@spx.com

Plenty Mixers, An SPX Brand
1st Floor, Clark House
Hulley Road, Macclesfield
Cheshire, SK10 2LU UK
Phone: +44 (0) 1625 505770 Fax: +44 (0) 1625 668980

For more information about our worldwide locations, approvals, certifications, and local representatives, please visit www.spxpe.com.

SPX reserves the right to incorporate our latest design and material changes without notice or obligation. Design features, materials of construction and dimensional data, as described in this bulletin, are provided for your information only and should not be relied upon unless confirmed in writing. Certified drawings are available upon request.